

## Incident Command Staff Mission Chaplain

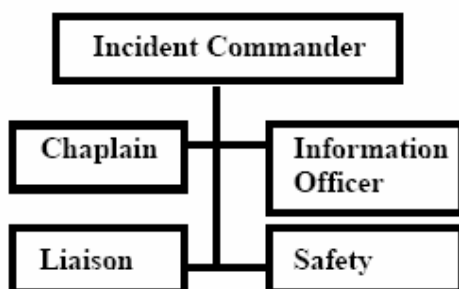


Figure 8-2. ICS Command Staff

### Civil Air Patrol Model

**Chaplain Staff Officer** – The Chaplain Staff officer, commonly called the mission chaplain, is usually the highest-ranking chaplain involved in the mission. The mission chaplain ministers to both spiritual and emotional needs of all individuals, families and mission staff alike. The chaplain arranges for religious service or observances on Sundays and other holy days of obligation. During the mission, the chaplain may serve as a liaison for victims’ families, providing information on the progress of the mission and coordinating the families’ needs with the logistics chief or other mission personnel and agencies as necessary. When serious injury or loss of life has occurred, the mission chaplain may provide pastoral care to the mission staff, victims, survivors, and their families. (CAPR 60-3, 8-3, 4)

Chaplains are an integral part of the Incident Command System. Without a mission Chaplain the mission cannot be adequately accomplished. The following procedure should be followed in securing a mission chaplain:

1. Once the Incident Commander is appointed, both the General Staff and the Command Staff must be assembled.
2. Appointing the Mission Chaplain.
  - a. If the Incident Commander is unfamiliar with available Chaplains, they should ask assistance from the Wing Chaplain.
  - b. If a Mission Chaplain is not available at the Wing level, the Region Chaplain should be contacted.
  - c. If a mission chaplain is not found at the Region level, the Civil Air Patrol Chief of Chaplain Services should be contacted, and a mission chaplain will be located and made available for assignment by the Incident Commander. The Chief of Chaplain Services will notify the CAP National Operations Center before Chaplains are moved to the mission base so they are covered by insurance and also to make sure funds are available to cover associated costs.

If the Incident is a large disaster lasting several days or weeks, additional Chaplains will be needed. The emotional needs and pastoral needs should be attended to by a chaplain. Incidents without chaplain ministry are at risk of leaving persons with unresolved issues that may cause serious mental and physical health issues for all persons involved.